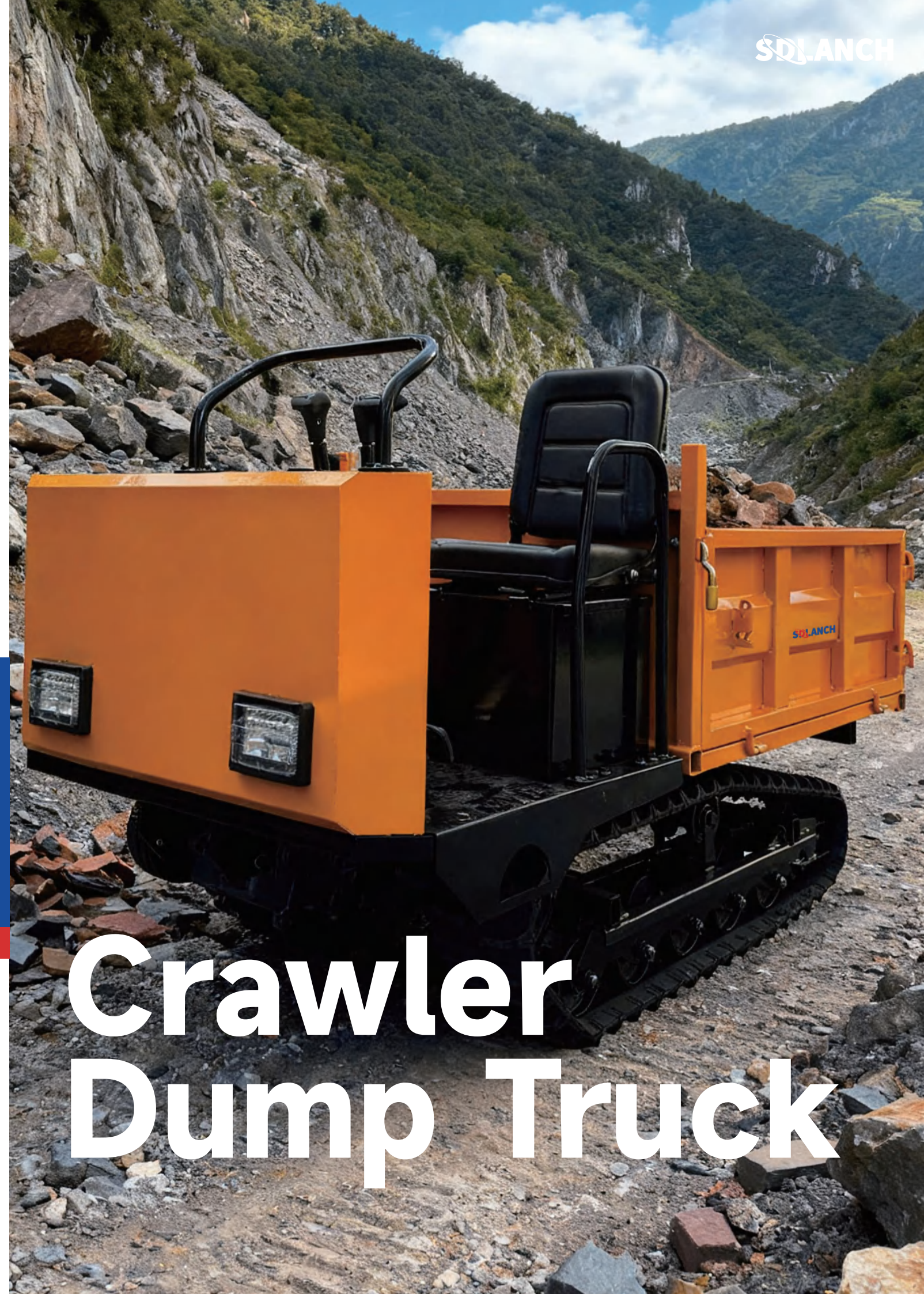


**SDLANCH
INTELLIGENT CO LTD**

☎ Phone:0537-3162017
✉ E-mail:info@sdlanch.com
🌐 Website:www.sdlanch.com



**Crawler
Dump Truck**

COMPANY PROFILE

SDLANCH INTELLIGENT CO., LTD

Since 2016 and is located on the first floor of an office building in Huangtun Street, Guangan Road, High-tech Zone, Jining City, Shandong Province. It is a high-tech innovative enterprise integrating research and development, production and sales. Up to now, it has set up offices and regional overseas warehouses in the United States, Russia, the United Kingdom, Spain, Australia, South Korea, Saudi Arabia and other places.

The total area of the factory is 105,000 square meters. It has 2 R&D centers, 3 independent factories, 9 standard workshops, and 700 employees with degrees ranging from PhDs to Masters and Bachelors. Among them, there are 100+ senior technicians, 30+ R&D engineers, and 20+ senior engineers. The company holds the "ISO:9001 Quality Management System Certification" and international authoritative third-party certifications such as the US EPA, EU CE, Euro-V, and SGS. The company has over 1,000 SKUs and its products are exported to 170 countries and regions.

CONTENTS

Product Introduction	01
SDLD25Crawler Dump Truck	03
SDLD35Crawler Dump Truck	05



TRACKED TRANSPORT VEHICLE

Crawler dump trucks are a type of transport vehicle designed for complex terrain and special environments. They have excellent obstacle-crossing capabilities and are suitable for all terrains. In addition to basic cargo transportation, some models also have a self-unloading function, which can quickly unload cargo and improve work efficiency. At the same time, there are also multi-functional products, such as those with a tipping bucket and a ride-on type, which can adapt to more operational needs. Made of sturdy materials such as steel plates, they are highly durable. In addition, crawler dump trucks also play an important role in the construction industry, mining industry, and agricultural fields, which can improve the transportation efficiency of materials, reduce the labor intensity of manual handling, and ensure the safety of workers.



PRODUCT FEATURES

01

ALL-TERRAIN PASS ABILITY:
adapt to various complex terrains.

**FLEXIBLE AND CONVENIENT
OPERATION:**
hand-held design, easy to operate.

02

03

**LOW NOISE AND ENVIRONMENTAL
PROTECTION:**
reduce operating noise pollution.

**HIGH-EFFICIENCY
UNLOADING:**
self-unloading function, improve work
efficiency.

04

05

**DURABLE AND EASY
TO MAINTAIN:**
strong and durable, low maintenance cost.

SDLD25

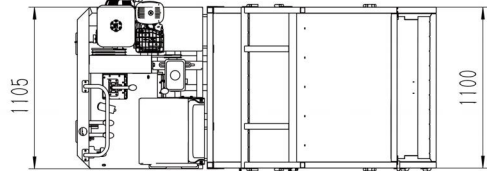
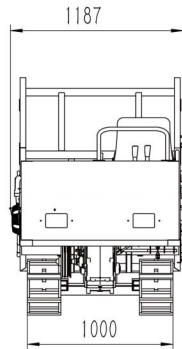
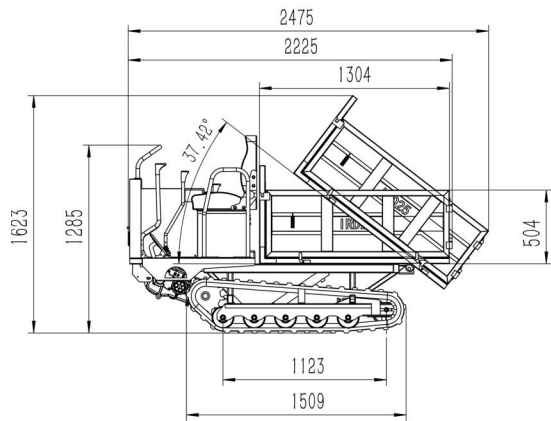


TECHNICAL PARAMETERS



SDLD25		
Engine model	Briggs & Stratton	
Engine power	8.6	(kw)
Transmission model	Gul18	
Transmission gear	3+1	input/output gear
External dimensions	2270*1105*1200	(mm)
Carriage dimensions	1300*1100*500	(mm)
Track material	Engineering rubber track	
Track model	230*72*46	(mm)
Maximum load	1500	(kg)
Drive mode	Drive pulley drive	
Starting mode	Electric ignition	
Maximum speed	15	(km/h)
Minimum speed	8	(km/h)
Turning radius	1900	(mm)
Unloading method	Dumping and tipping	
Rollers	Five on one side	

MACHINE DESIGN DRAWING



SDLD35

TECHNICAL
PARAMETERS



SDLD35		
Load	3000	(kg)
Weight	1400	(kg)
Variable box model	Guli-21	
Vehicle size	3350*1600*1550	(mm)
Car box	2200*1600*1000	(mm)
Track(model)	350*90*56	(mm)
Track type	Agricultural rubber track	
Ground length	1730	(mm)
Maximum travel speed	10	(km/h)
Minimum travel speed	3	(km/h)
Chassis width	1550	(mm)
Starting method	Electric start	
Lifting height	Within 2 meters from the bottom of the car to the ground	
Lifting weight	1500	(kg)
Cooling method	Water cooling	
Uphill angle	35°	
Gear	6 Forward and 2 reverse	
Dumping function	Hydraulic single-top dumping and rear dump	
Engine	Briggs & Stratton	
Number of engine cylinders	Double-bar(air-cooled)	
Power/power	25	(horsepower)

MACHINE
DESIGN DRAWING

