

**SDLANCH  
INTELLIGENT CO LTD**

☎ Phone:0537-3162017  
✉ E-mail:info@sdlanch.com  
🌐 Website:www.sdlanch.com



**Mini  
Excavator**



# COMPANY PROFILE

## SDLANCH INTELLIGENT CO., LTD

Since 2016 and is located on the first floor of an office building in Huangtun Street, Guangan Road, High-tech Zone, Jining City, Shandong Province. It is a high-tech innovative enterprise integrating research and development, production and sales. Up to now, it has set up offices and regional overseas warehouses in the United States, Russia, the United Kingdom, Spain, Australia, South Korea, Saudi Arabia and other places. The total area of the factory is 105,000 square meters. It has 2 R&D centers, 3 independent factories, 9 standard workshops, and 700 employees with degrees ranging from PhDs to Masters and Bachelors. Among them, there are 100+ senior technicians, 30+ R&D engineers, and 20+ senior engineers. The company holds the "ISO:9001 Quality Management System Certification" and international authoritative third-party certifications such as the US EPA, EU CE, Euro-V, and SGS. The company has over 1,000 SKUs and its products are exported to 170 countries and regions.

## CONTENTS

Product Introduction	01
SDLE13Excavator	03
SDLE15Excavator	05
SDLE16Excavator	07
SDLE18Excavator	09
SDLE20Excavator	11
SDLE25Excavator	13
SDLE26Excavator	15
SDLE30Excavator	17
SDLE35Excavator	19
SDLE36Excavator	20
SDLE45Excavator	23
SDLE46Excavator	25
Excavator parts	27



# EXCAVATOR

1-2.5 ton mini excavator, 3-6 ton small excavator series, is the hot-selling product line created by sd lanch (Shandong) intelligent Technology Co., Ltd. This series of products adopts international advanced design concepts such as modularization, serialization, and standardization. The whole machine has a scientific and reasonable layout, beautiful and generous appearance, and has a new high-end quality experience. The full range of excavators has the characteristics of being small, flexible, advanced, reliable, energy-saving, efficient, comfortable, convenient, and beautiful. Small excavators can be equipped with Briggs and Stratton, RATO gasoline engines, Koop, Laidong, Changchai, Xinchai, Kubota, Yanmar, Cummins Perkins diesel engines, etc. At the same time, they can be equipped with hundreds of attachments, which are flexible and versatile. It is widely used in ditch digging, landscaping, house decoration, residential construction, tunnel construction, municipal road engineering, etc.



## PRODUCT FEATURES

01

**SMALL AND FLEXIBLE:**

suitable for narrow space operation, high maneuverability.  
Easy to operate: short training time is enough, easy to operate.

02

**EASY TO OPERATE:**

short training time is enough, easy to operate.

03

**HIGH-EFFICIENCY OPERATION:**

quickly complete excavation tasks and improve construction efficiency.

04

**MULTIFUNCTIONAL ACCESSORIES:**

accessories can be replaced according to needs to achieve multiple uses.

05

**EASY TO TRANSPORT:**

small vehicles can be used for transportation, reducing transfer costs.

06

**LOW MAINTENANCE COST:**

simple structure, easy maintenance.

07

**GOOD ENVIRONMENTAL PERFORMANCE:**

low noise, suitable for urban operations, reducing environmental pollution.



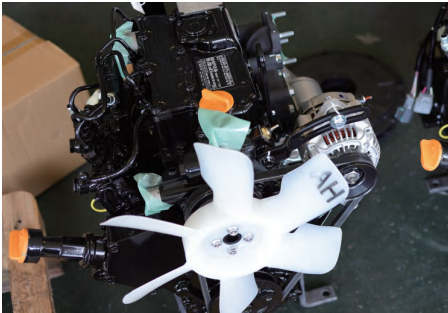
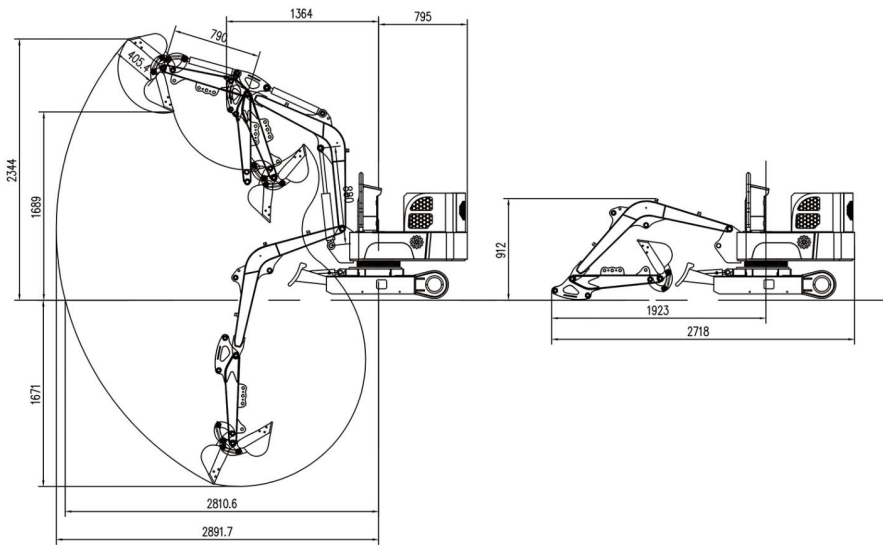
# SDLE13

## TECHNICAL PARAMETERS



SDLE13		
Engine type	Koop/RAT0/Briggs/Stratton	
Power types	Single cylinder, four stroke,air-cooled Vertical Lower oil cylinder	
Bucket capacity	0.025	(m <sup>3</sup> )
Rated power	8.5/3600	(kw/rpm)
Horsepower	12	(HP)
Fuel types	Gasoline	
Maximum excavation height	2350	(mm)
Maximum unloading height	1600	(mm)
Maximum excavation depth	1300	(mm)
Overall machine size	2300*1000*2200	(mm)

## MACHINE DESIGN DRAWING



Engine



Caterpillar tires



Multiple attachments  
can be swapped out



# SDLE15

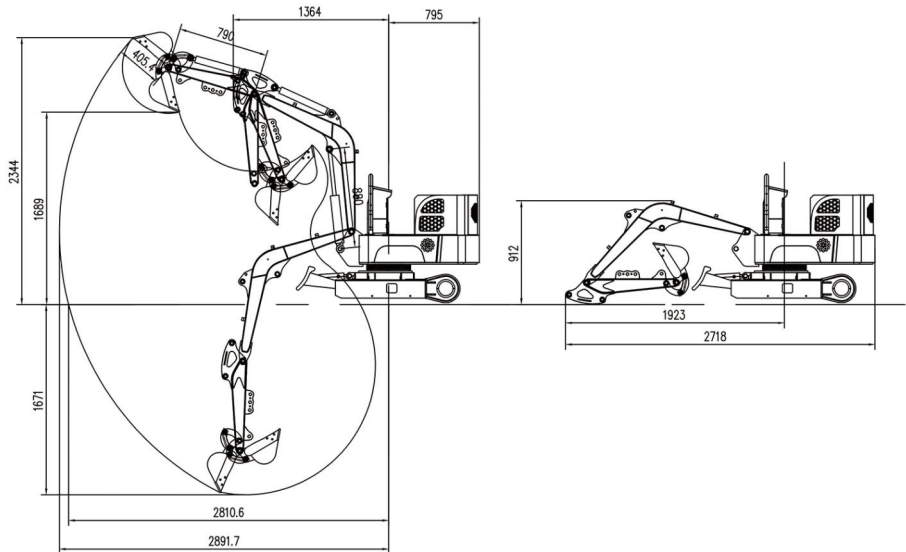


## TECHNICAL PARAMETERS



SDLE15		
Engine type	Koop/RAT0/Briggs/Stratton	
Power types	Single cylinder, four stroke, air-cooled vertical Lower oil cylinder	
Bucket capacity	0.025	(m <sup>3</sup> )
Rated power	8.8/3600	(kw/rpm)
Horsepower	12	(HP)
Fuel types	Gasoline	
Maximum excavation height	2350	(mm)
Maximum unloading height	1600	(mm)
Maximum excavation depth	1300	(mm)
Overall machine size	2300*1000*2200	(mm)

## MACHINE DESIGN DRAWING



Engine



Caterpillar tires



Multiple attachments  
can be swapped out



# SDLE16

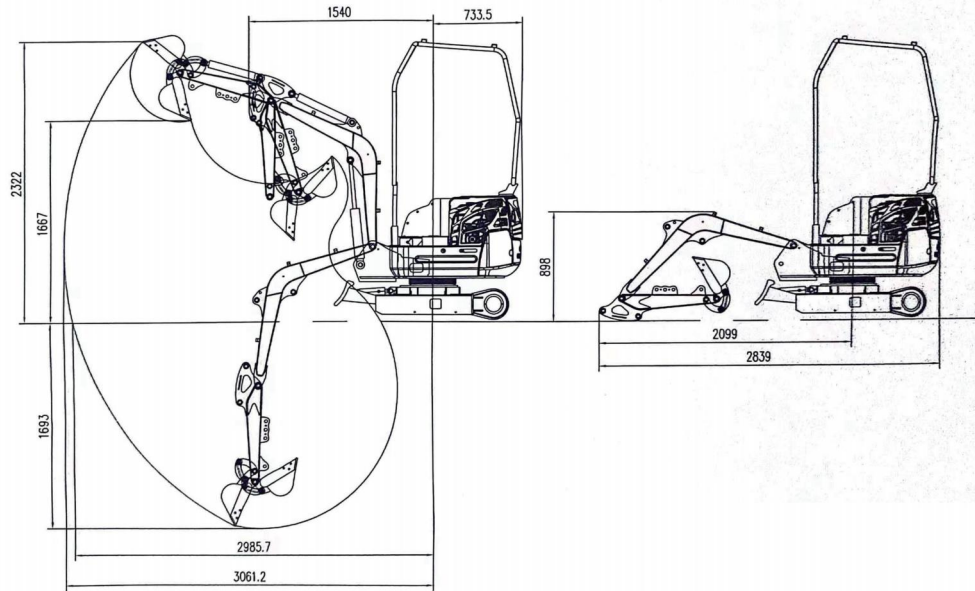


## TECHNICAL PARAMETERS



SDLE16		
Engine type	Koop/RAT0/Briggs/Stratton	
Power types	Single cylinder, four stroke, air-cooled vertical Lower oil cylinder	
Bucket capacity	0.03	(m <sup>3</sup> )
Rated power	8.5/3600	(kw/rpm)
Horsepower	12	(HP)
Fuel types	Gasoline	
Maximum excavation height	2560	(mm)
Maximum unloading height	1800	(mm)
Maximum excavation depth	1693	(mm)
Overall machine size	2500*1000*2200	(mm)

## MACHINE DESIGN DRAWING



Engine



Caterpillar tires



Multiple attachments  
can be swapped out



# SDLE18

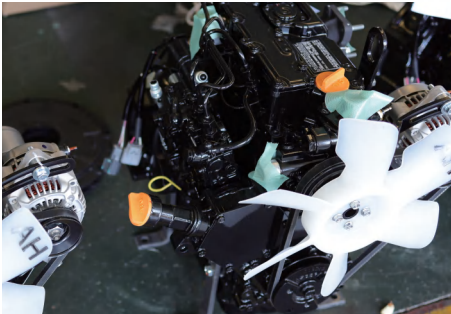
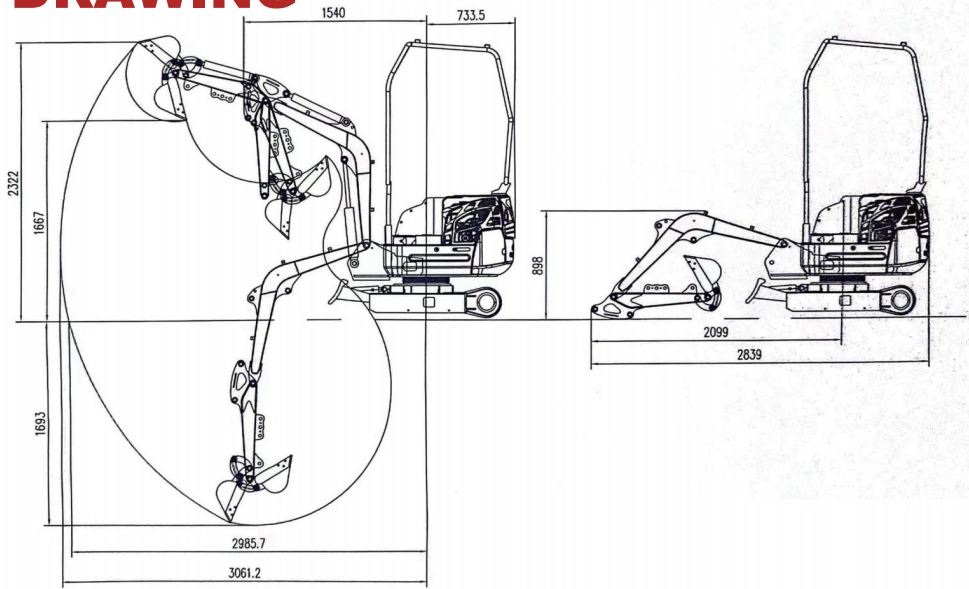


## TECHNICAL PARAMETERS



SDLE18		
Engine type	Koop/RAT0/Briggs/Stratton	
Power types	Single cylinder, four stroke, air-cooled vertical Lower oil cylinder	
Bucket capacity	0.03	(m <sup>3</sup> )
Rated power	8.5/3600	(kw/rpm)
Horsepower	12	(HP)
Fuel types	Gasoline	
Maximum excavation height	2560	(mm)
Maximum unloading height	1800	(mm)
Maximum excavation depth	1693	(mm)
Overall machine size	2600*1000*2300	(mm)

## MACHINE DESIGN DRAWING



Engine



Caterpillar tires



Multiple attachments  
can be swapped out



# SDLE20

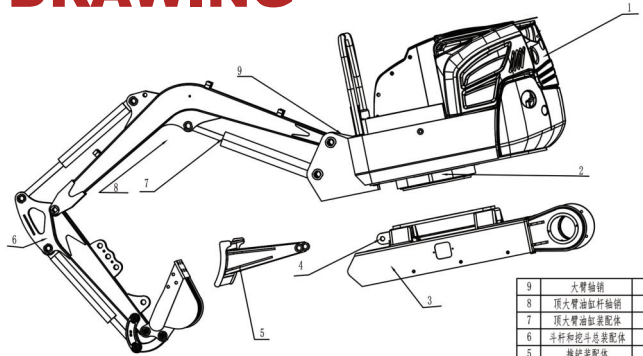


## TECHNICAL PARAMETERS

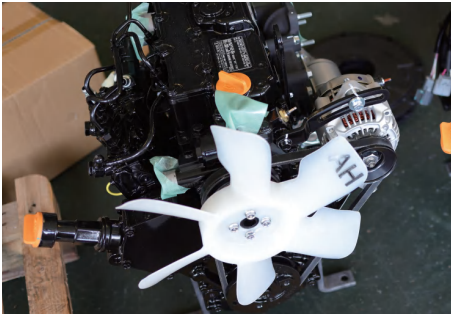


SDLE20		
Engine model	Kubota D722/YANMAR	
Power type	Internal combustion engine Upper oil cylinder	
Displacement	0.719	(L)
Maximum power	10.2	(kw/rpm)
Horsepower	14	(HP)
Fuel type	Diesel	
Fuel consumption	0.5-1.2	(g/kwh)
Fuel capacity	15	(L)
Bucket capacity	0.03	(m <sup>3</sup> )
Track width	180	(mm)
Maximum unloading height	1800	(mm)
Maximum excavation depth	1693	(mm)
Length*width*height	2925*1100*2422	(mm)

## MACHINE DESIGN DRAWING



9	大臂轴销	2	套			配M24螺母		
8	顶大臂轴销轴套	1	套			配M22螺母		
7	顶大臂轴销轴套	1	套					
6	斗杆轴销轴套	1	套					
5	推铲轴套	1	套					
4	推铲轴销	4	套					
3	下车架轴套	1	套					
2	的齿圈	1	套					
1	上齿半轴上轴套	1	套					
序号	零件名称	图号	数量	单位	重量	总量	材料规格	备注



Engine



Caterpillar tires



Multiple attachments  
can be swapped out



# SDLE25

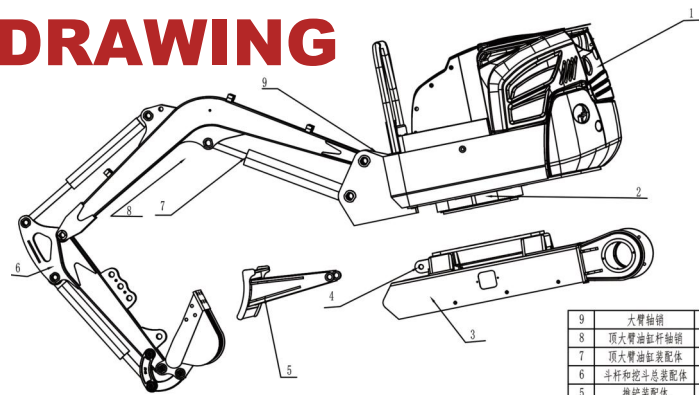


## TECHNICAL PARAMETERS

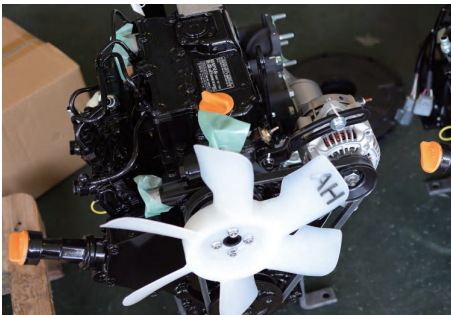


SDLE25		
Engine model	Kubota D722/YANMAR	
Power type	Internal combustion engine Upper oil cylinder	
Displacement	0.719	(L)
Maximum power	10.2	(kw/rpm)
Horsepower	14	(HP)
Fuel type	Diesel	
Fuel consumption	0.5-1.2	(g/kwh)
Fuel capacity	15	(L)
Bucket capacity	0.03	(m³)
Track width	180	(mm)
Maximum unloading height	1800	(mm)
Maximum excavation depth	1693	(mm)
Length*width*height	2925*1100*2422	(mm)

## MACHINE DESIGN DRAWING



9	大臂轴销	2	套		配M24螺母			
8	顶大臂油缸杆轴销	1	套		配M22螺母			
7	顶大臂油缸缸套	1	套					
6	斗杆和挖斗总装配体	1	套					
5	推铲轴销	1	套					
4	推铲轴销	4	套					
3	下车架装配体	1	套					
2	内齿圈轴	1	套					
1	上车架+上车体	1	套					
序号	零件名称	图号	数量	单位	重量	总量	材料规格	备注



Engine



Caterpillar tires



Multiple attachments  
can be swapped out





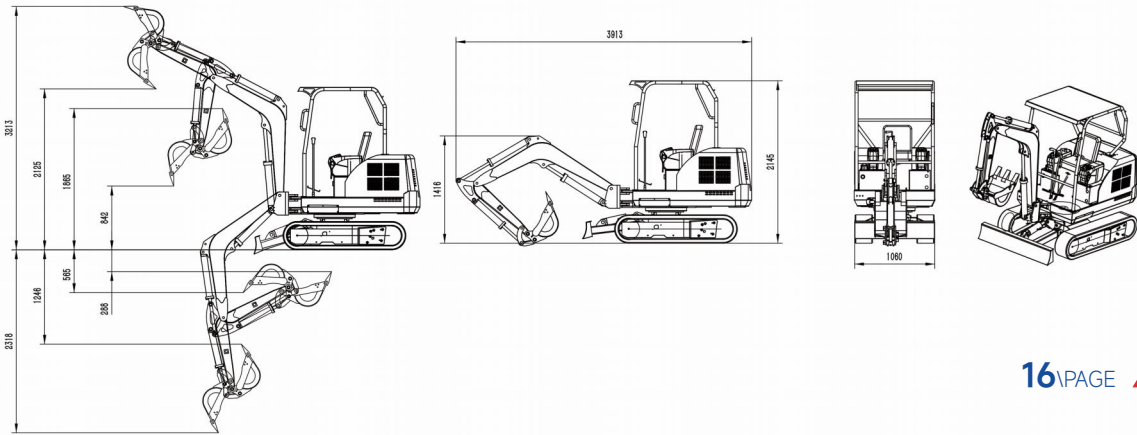
# SDLE26



## TECHNICAL PARAMETERS

SDLE26		
Working weight	2	(ton)
Engine brand	Laidong/YANMAR	
Rated power	18.5	(kw)
Bucket capacity	0.06	(m³)
Bucket width (including side teeth)	470	(mm)
Travel motor	Danfoss	
Travel speed	2.5	(kw/h)
Slewing motor	Danfoss	
Slewing speed	10	(r/min)
Hydraulic system	Gear pump (Tianjin travel hydraulics/North em Multi-way valve)	
Body rotation radius	1270	(mm)
Body rotation angle	360°	
Boom rotation angle	55/45	(L/R)
Grad ability	35	
Length*width*height	3600*1060*2200	(mm)
Track width	230	(mm)
Track length	1900	(mm)
Body width	1060	(mm)
Maximum digging radius	4050	(mm)
Maximum digging depth	2100	(mm)
Maximum digging height	3400	(mm)
Maximum unloading height	2200	(mm)
Minimum swing radius	1974	(mm)
Maximum digging depth of bulldozer	150	(mm)
Maximum lifting height of bulldozer	270	(mm)

## MACHINE DESIGN DRAWING





# SDLE30

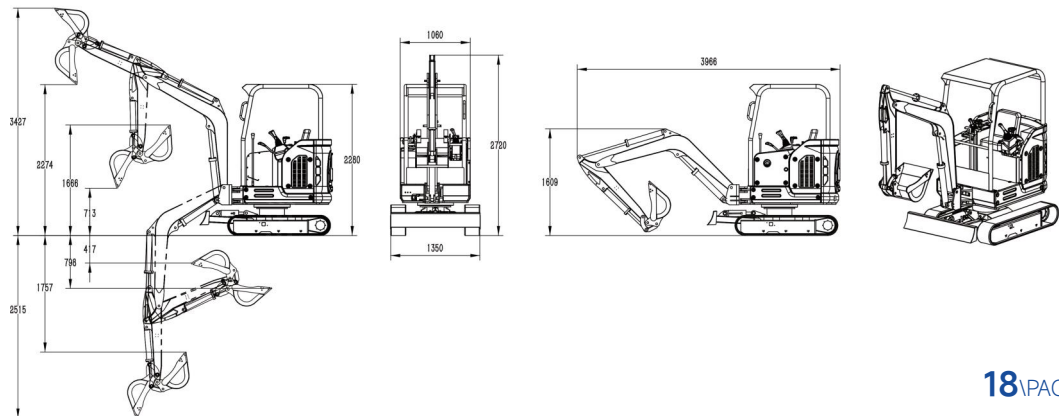


## TECHNICAL PARAMETERS



SDLE30		
Working weight	2.5	(ton)
Engine brand	Changcai 390/YANMAR	
Rated power	20	(kw)
Bucket capacity	0.07	(m <sup>3</sup> )
Bucket width (including side teeth)	470	(mm)
Travel motor	Danfoss	
Travel speed	3.4	(kw/h)
Slewing motor	Danfoss	
Slewing speed	10	(r/min)
Hydraulic system	Gear pump (Tianjintravel hydraulics/North em multi-way valve)	
Body rotation radius	895	(mm)
Body rotation angle	360°	
Boom rotation angle	55/45	(L/R)
Grad ability	35	
Length*width*height	3966*1350*2280	(mm)
Track width	230	(mm)
Track length	1900	(mm)
Body width	1350	(mm)
Maximum digging radius	4519	(mm)
Maximum digging depth	2752	(mm)
Maximum digging height	3427	(mm)
Maximum unloading height	2600	(mm)
Minimum swing radius	2162	(mm)
Maximum digging depth of bulldozer	281	(mm)
Maximum lifting height of bulldozer	214	(mm)

## MACHINE DESIGN DRAWING





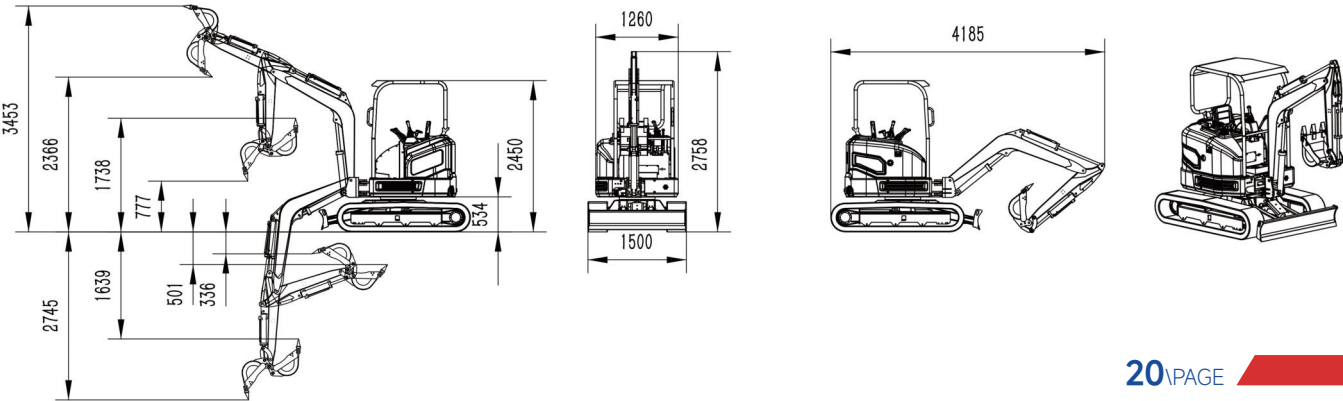


# SDLE35

## TECHNICAL PARAMETERS

SDLE35		
Working weight	2.6	(ton)
Engine brand	changcai 390/YANMAR	
Rated power	20	(kw)
Bucket capacity	0.075	(m³)
Bucket width (including side teeth)	580	(mm)
Travel motor	Height speed-Likechuan	
Travel speed	3.1/2	(kw/h)
Slewing motor	Likechuan	
Slewing speed	12	(r/min)
Hydraulic system	Plunger pump/Northern load multi-way valve (complete set: Longgong/Hengli)	
Body rotation radius	923	(mm)
Body rotation angle	360°	
Boom rotation angle	55/45	(L/R)
Grad ability	35	
Length*width*height	3074*1500*2450	(mm)
Track width	250	(mm)
Track length	2100	(mm)
Body width	1500	(mm)
Maximum digging radius	4358	(mm)
Maximum digging depth	2570	(mm)
Maximum digging height	3453	(mm)
Maximum unloading height	2366	(mm)
Minimum swing radius	2190	(mm)
Maximum digging depth of bulldozer	291	(mm)
Maximum lifting height of bulldozer	194	(mm)

## MACHINE DESIGN DRAWING





# SDLE36

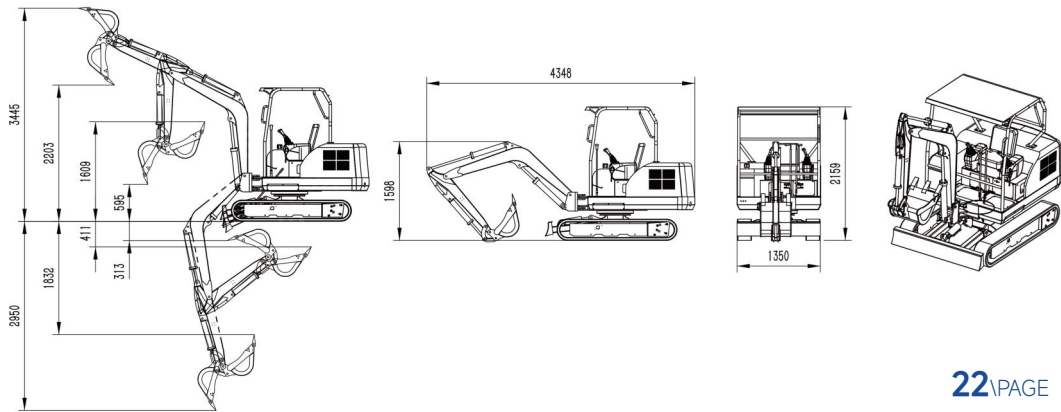


## TECHNICAL PARAMETERS



SDLE36		
Working weight	3	(ton)
Engine brand	Changcai 390/YANMAR	
Rated power	20	(kw)
Bucket capacity	0.1	(m³)
Bucket width (including side teeth)	580	(mm)
Travel motor	Danfoss	
Travel speed	2.7	(kw/h)
Slewing motor	Danfoss	
Slewing speed	10	(r/min)
Hydraulic system	Plunger pump(Likechuan/Northern multi-way valve)	
Body rotation radius	1326	(mm)
Body rotation angle	360°	
Boom rotation angle	55/45	(L/R)
Grad ability	35	
Length*width*height	4180*1350*2250	(mm)
Track width	230	(mm)
Track length	2100	(mm)
Body width	1350	(mm)
Maximum digging radius	4040	(mm)
Maximum digging depth	2500	(mm)
Maximum digging height	3900	(mm)
Maximum unloading height	2600	(mm)
Minimum swing radius	2211	(mm)
Maximum digging depth of bulldozer	190	(mm)
Maximum lifting height of bulldozer	350	(mm)

## MACHINE DESIGN DRAWING







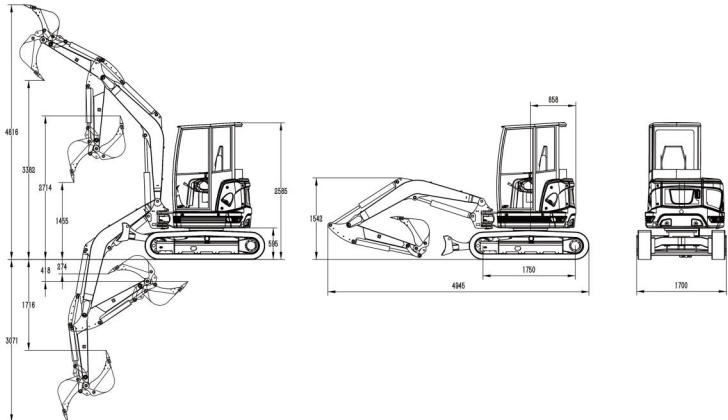
# SDLE45



## TECHNICAL PARAMETERS

SDLE45		
Working weight	3.5	(ton)
Engine brand	xincai 490/YANMAR	
Rated power	36.8	(kw)
Bucket capacity	0.1	(m³)
Bucket width (including side teeth)	580	(mm)
Travel motor	Danfoss	
Travel speed	2.7	(kw/h)
Slewing motor	Danfoss	
Slewing speed	10	(r/min)
Hydraulic system	Hydraulic system: plunger pump (Likechuan/North em multi-way valve)	
Body rotation radius	1326	(mm)
Body rotation angle	360°	
Boom rotation angle	55/45	(L/R)
Grad ability	35	
Length*width*height	4180*1500*2250	(mm)
Track width	230	(mm)
Track length	2100	(mm)
Body width	1500	(mm)
Maximum digging radius	4040	(mm)
Maximum digging depth	2500	(mm)
Maximum digging height	3900	(mm)
Maximum unloading height	2600	(mm)
Minimum swing radius	2211	(mm)
Maximum digging depth of bulldozer	190	(mm)
Maximum lifting height of bulldozer	355	(mm)

## MACHINE DESIGN DRAWING







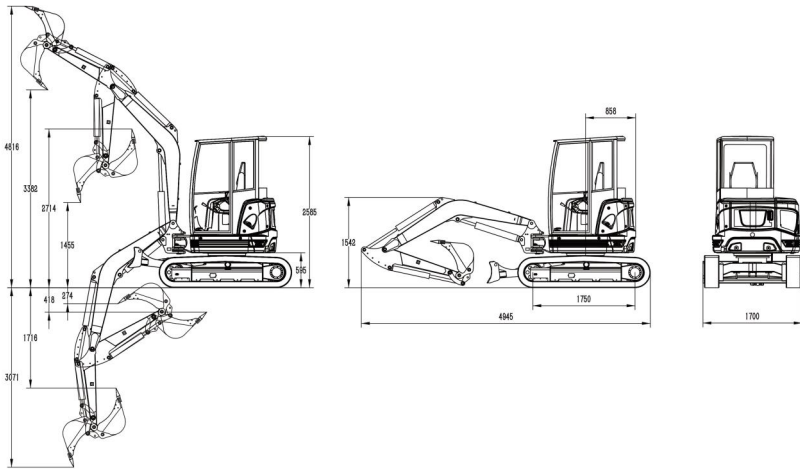
# SDLE46



## TECHNICAL PARAMETERS

SDLE46		
Working weight	3.5	(ton)
Engine brand	Kubota 1703/YANMAR	
Rated power	18.2	(kw)
Bucket capacity	0.11	(m³)
Bucket width (including side teeth)	580	(mm)
Travel motor	High and low speed-Likechuan	
Travel speed	4.0/2.3	(kw/h)
Slewing motor	Likechuan	
Slewing speed	12	(r/min)
Hydraulic system	Plunger pump/(complete set: Long gong/Hengli)	
Body rotation radius	857	(mm)
Body rotation angle	360°	
Boom rotation angle	68/50	(L/R)
Length*width*height	4945*1700*2585	(mm)
Track width	300	(mm)
Track length	2300	(mm)
Body width	1700	(mm)
Maximum digging radius	5355	(mm)
Maximum digging depth	3071	(mm)
Maximum digging height	4816	(mm)
Maximum unloading height	3382	(mm)
Minimum swing radius	2347	(mm)
Maximum digging depth of bulldozer	432	(mm)
Maximum lifting height of bulldozer	345	(mm)

## MACHINE DESIGN DRAWING





# MINI EXCAVATOR ATTACHMENTS



Bucket



500/600/800/1000mm Plain Bucket



600/800mm Tilting Bucket



Shell Bucket



Rake



Wood grabber



Thumb



Auger Drill



Ripper



Hydraulic Hammer



Mechanical Quick Hitch



Ditch Bucket

**Bucket type accessories:**The bucket is one of the most commonly used accessories for excavators, divided into various types such as standard buckets, mud buckets, screen buckets, and tilting buckets.

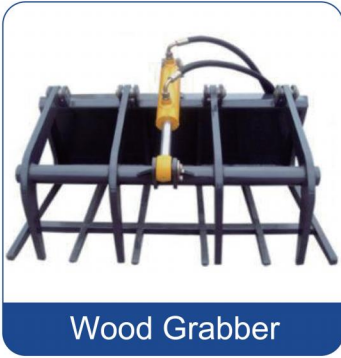
**Crushing hammer equipment:**Crushing hammer is a common accessory equipment on excavators, mainly used to break hard rocks, concrete, asphalt pavement, etc.

**Pliers:**Pliers are specialized accessory equipment for excavators, mainly used for gripping, gripping materials, or securing materials.

**Drill bit accessories:** Drill bits are one of the accessory equipment on excavators, suitable for construction fields such as garden drilling, vacuum wells, and cement drilling.

**Other attachments:**In addition to the four common attachments mentioned above, there are also many other attachments on excavators, such as quick changers, lawn mowers, hedge row scarifiers, thumb clips, etc.

# INTRODUCTION TO ASSISTIVE DEVICES



Wood Grabber



Direct Digging



4-in-1 Bucket



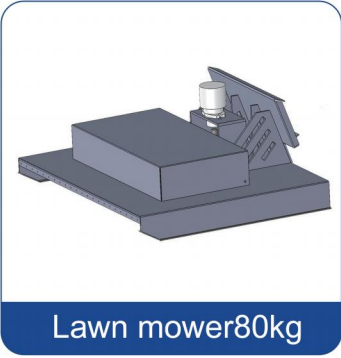
Snow Pusher



Breaker



Sweeper



Lawn mower 80kg



Trencher



Snow Blower



Enclosed Sweeper



Drill



Auger



Fork



Grading Tool



Bucket



Rock Bucket



Lawn Mower 115kg



Cement Mixer